

MK3 FOR CLIMMA COMPACT QUATTRO SERIES

This instruction is for the replacement of the COMPACT QUATTRO control box and its remote mechanical control panel with a MK3 power board and control panel.

Please refer to the following table to identify the models for which the MK3 board and control panel are compatible and covered by this instruction.

SERIES	CODE	FROM YEAR
COMPACT QUATTRO	MC00.....	2004

Compact Quattro	Part #	Fan Part #	Fan W	Fan run cap	Compressor model	Comp run cap uF	notes
5 Q	MC5	M73950	100	2	DANFOSS SC12G R134A	-	
7 Q	MC7	M64785 M77310	125	4	TOSHIBA PG108X1C R407C	25	
9 Q	MC9	M73950	100	2	DANFOSS SC21G R134A	10	
10 Q	MC10	M68985	240	6,3	TOSHIBA PG150X1C R407C	25	
12 Q	MC12	M68985	240	6,3	TOSHIBA PG180X1C R407C	30	
16 Q	MC16	TA0520	355	built in	TOSHIBA PG225X2C R407C	35	fan capacitor inside the blower assy
17S Q	MC17S	2 x M73950	2 x 100	2x2	SANYO C-RHN110E5A R407C	25	
24S Q	MC24S	2xM64785 2 x M77310	2 x 125 2x130	2 x 4 2 x 3,15	LG NJ282PAD R407C	35	

WARNING - AC 230V !!!

Before opening any electric equipment make sure there is no electrical supply.



MK3 FOR CLIMMA COMPACT QUATTRO SERIES

Please refer to the following table in order to have the procedure suggested for every specific model

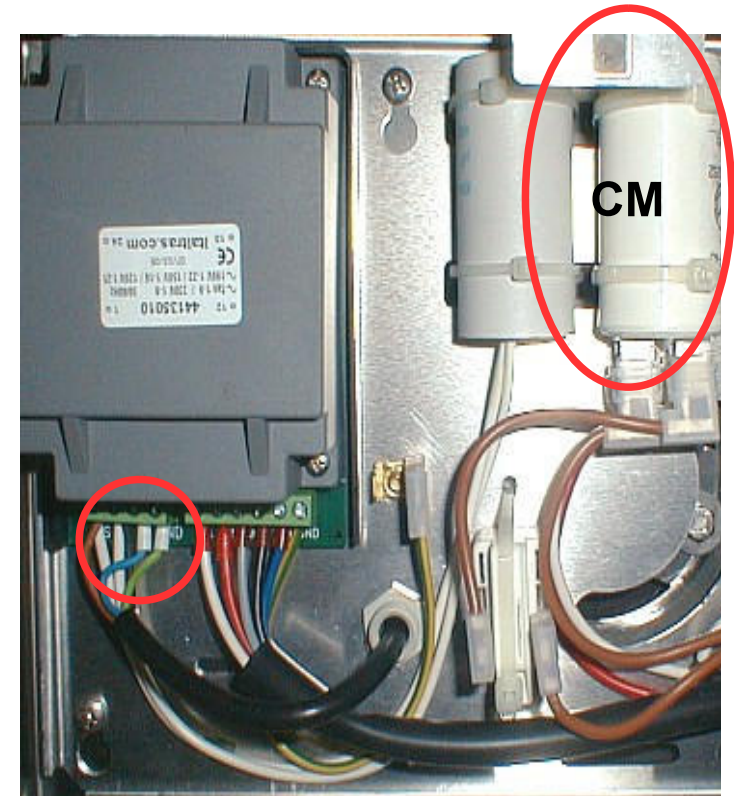
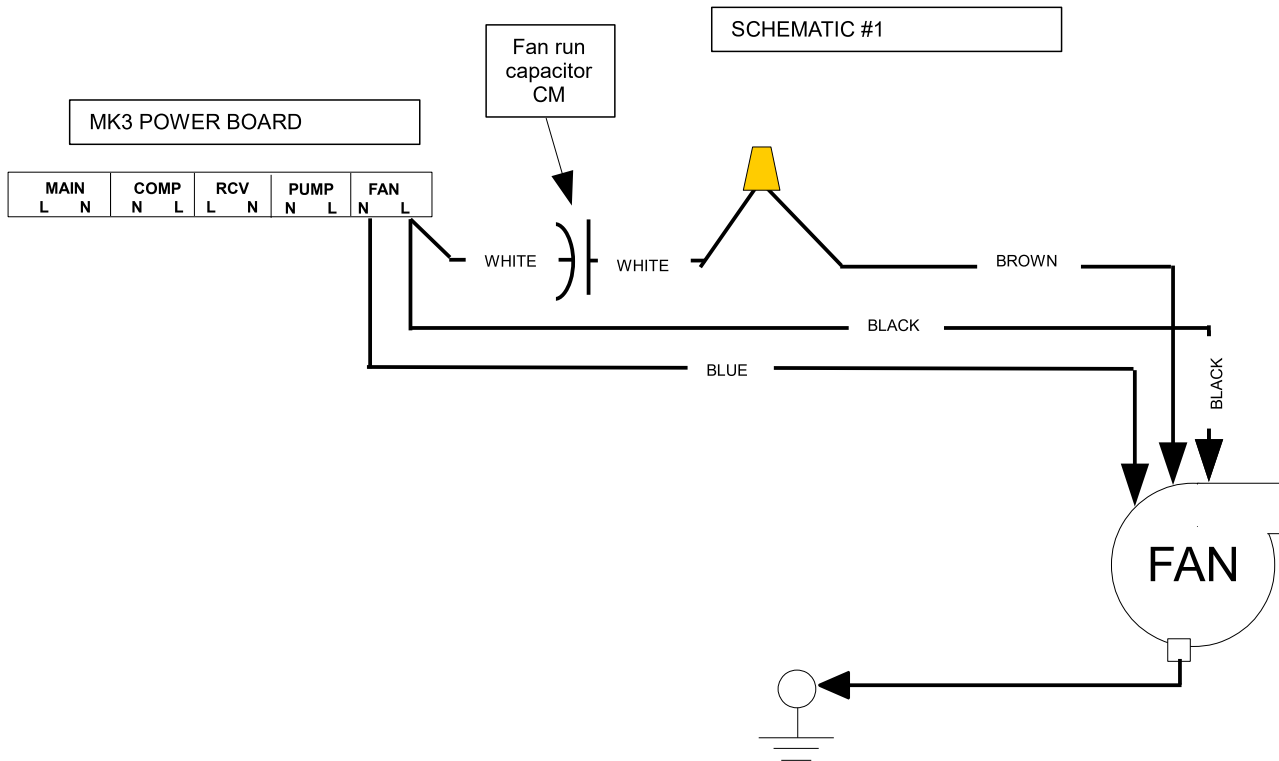
QUATTRO MODEL	COMPRESSOR MODEL	NOTES + PART #	INSTRUCTION
Compact 5 - Split 4	Compressor Danfoss SC12G	M81301 - MK3B – MCAV4 Start relay on the compressor incorporating the start capacitor. No need of compressor run capacitor	STEP 1 - STEP 4
Compact 9 - Split 8	Compressor Danfoss SC21G	M81301 - MK3B – MCAV4 + start booster M77320 or M4624R1 start kit	STEP 1 – STEP 2
Compact 10 – Split 10	Rotary compressor	M81301 - MK3B – MCAV4	STEP 1 – STEP 4
Compact 12 – Split 12	Rotary compressor	M81301 - MK3B – MCAV4	STEP 1 – STEP 4
Compact 16 – Split 16	Rotary compressor	M81301 - MK3B – MCAV4	STEP 1 – STEP 4
Compact 17S – Split 17S	Rotary compressor	M81301 - MK3B – MCAV4	STEP 1 – STEP 4
Compact 24S – Split 24S	Rotary compressor	M81301 - MK3B – MCAV4	STEP 1 – STEP 4

WARNING - AC 230V !!!
Before opening any electric equipment make sure there is no electrical supply.



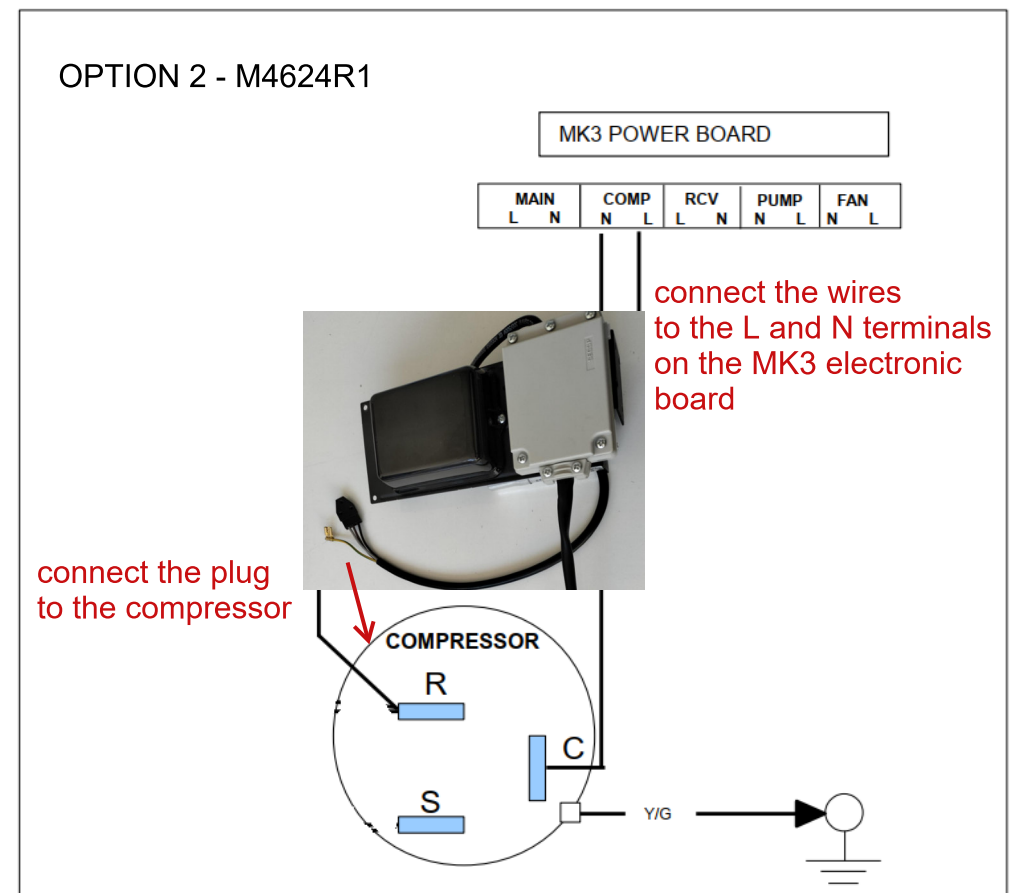
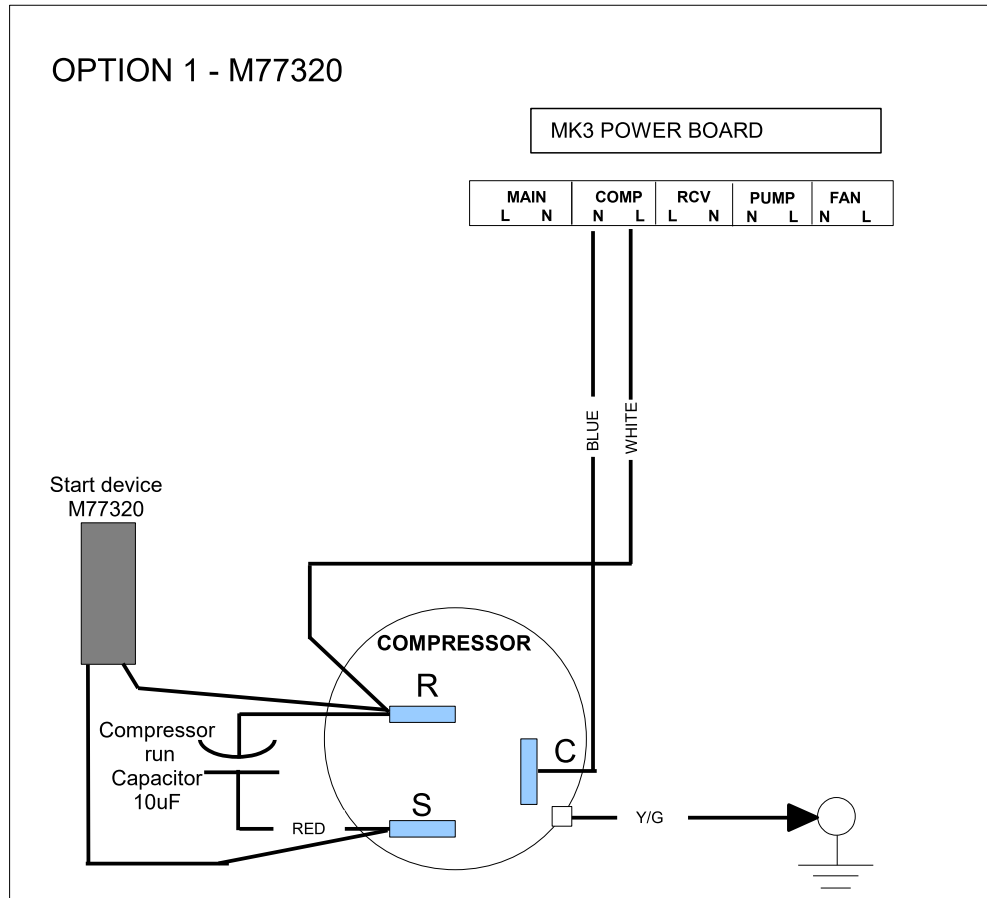
MK3 FOR CLIMMA COMPACT QUATTRO SERIES – STEP 1

- ✓ Disconnect all the harness from the old control box, marking the cables of the supply, pump, fan, compressor, pressure switch, reverse cycle valve (RC models) or electrical heater (EH models).
- ✓ Identify and remove the fan run capacitor (CM) from the old electrical box disconnecting it from the transformer PCB. This capacitor will be needed when the fan is connected to the new MK3 power board as per schematic #1. **WARNING:** the run capacitor **MUST** be connected as shown while the 230V supply must be connected to the blue and black wires. A wrong connection can damage the fan motor.

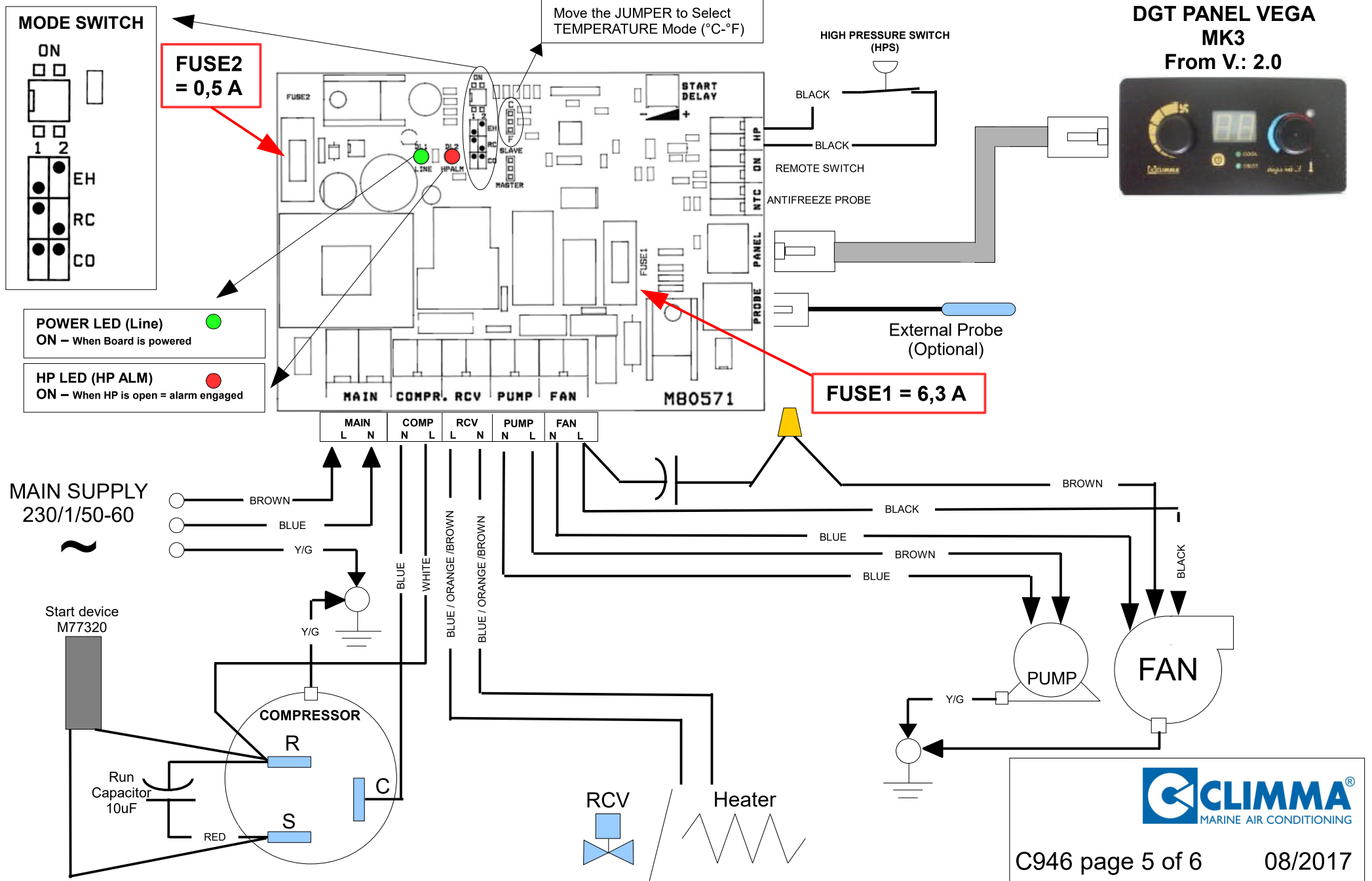


MK3 FOR CLIMMA COMPACT QUATTRO SERIES – COMPACT 9 ONLY – STEP 2

- ✓ Identify the compressor run capacitor 10uF inside the old electrical box. This capacitor needs to be installed on the unit and connected as per schematic.
- ✓ The Compact Cabin 9 needs a special start device in order to convert it to the MK3 control. You will need the original run capacitor CM of 10 uF and the booster kit M77320, both to be installed on the unit assembly and connected as per the following schematic #2.
- ✓ Alternatively, as option 2, the M4624R1 start kit is needed. In this case, the original run capacitor is not needed and the start kit must be installed as shown below in the right image



MK3 FOR CLIMMA COMPACT QUATTRO SERIES – COMPACT 9 ONLY – STEP 2



MK3 FOR CLIMMA COMPACT QUATTRO SERIES – STEP 4

